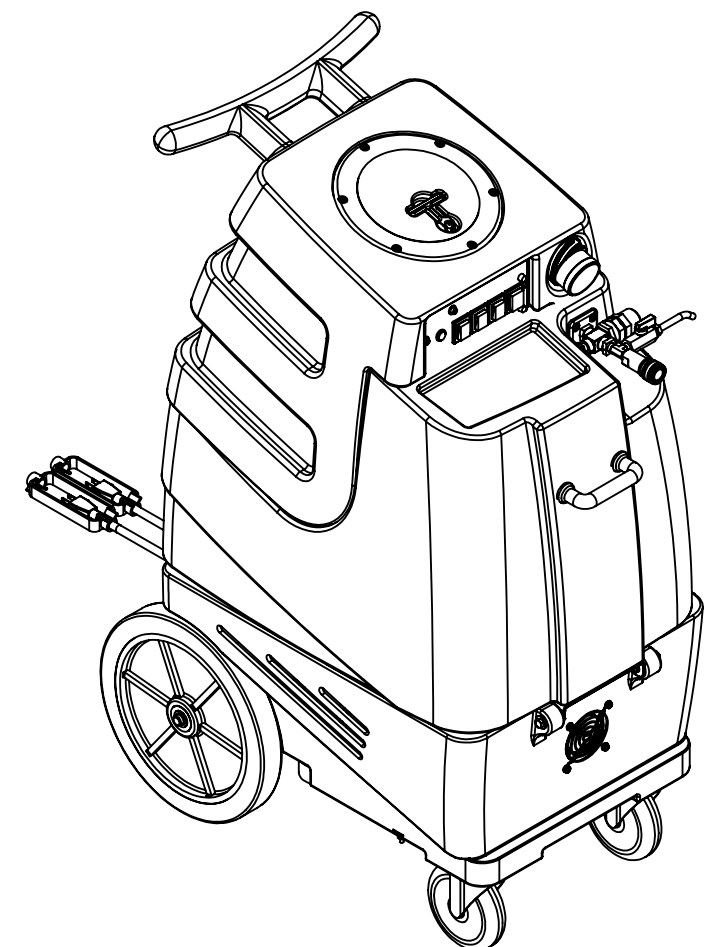


ITEM NO.	PART NO.	DESCRIPTION	QTY.	MSRP
1	H343	screw, #10 x 5/8" hex head, zinc	12	\$0.99 ea
2	H296	guard, cooling fan, wire	3	\$2.99 ea
3	C317	fan, cooling, 115V	1	\$21.49 ea
4	H216	nut, lock, 1/4-20, nylon insert, s/s	13	\$0.99 ea
5	H210	washer, 1/4" flat, s/s	19	\$0.99 ea
6	H666	caster, 5"	2	\$23.19 ea
7	H202	bolt, 1/4-20 x 3/4" hex head, s/s	14	\$0.99 ea
8	P731	base, speedster	1	\$141.99 ea
9	H371	axle, 18.25" x .50" dia	1	\$9.99 ea
10	H254	washer, axle, cut 1/2" id	4	\$0.99 ea
11	H251	wheel, 12"	2	\$41.99 ea
12	H219	cap, axle, 1/2"	2	\$0.99 ea
13	AH156	hose, 3/8", (OAL), f x fs, 5400 gray	2	\$23.99 ea
14	B103	elbow, brass, 90 deg, 1/4"mpt x 1/4" fpt	2	\$4.49 ea
15	B108	valve, brass, 1/4" check	1	\$13.99 ea
16	B142	coupling, brass, 1/4" fpt x 1/4" fpt	1	\$4.49 ea
17	H273	nut, kep, #10-32 zinc	8	\$0.99 ea
18	H528	bracket, heater mounting, dual	1	\$29.99 ea
19	H256	screw, #10-32 x 3/4" phil pan head, zinc	6	\$0.99 ea
20	E519	heating rod, 1000W, 115V	2	\$51.99 ea
21	H274	phil pan head screw zinc, 6-32 x 3/16"	10	\$0.99 ea
22	H903A	heater, aluminum cast, single	2	\$78.99 ea
23	E574	Thermostat, 310°F ± 10°F, Manual, 1/4"	2	\$17.99 ea
24	H275	6-32 x 3/16 p-pan internal sem zinc	8	\$0.99 ea
25	E573	Thermostat, 200°, Auto, 1/4"	2	\$16.49 ea
26	AH105	hose, 3/8" x 17-1/2", (OAL), f	1	\$31.99 ea
27	H768	bolt, 1/4-20 x 3/4" serrated hex flange, zinc	11	\$0.99 ea
28	H601	plate, manifold, parallel	1	\$13.49 ea
29	P750	manifold, dual vac, parallel	1	\$15.99 ea
30	G004	gasket, vacuum motor	2	\$8.99 ea
31	H500	vac support, 2 stage, 3-1/8"	6	\$3.99 ea
32	G059	exhaust boot, plastisol	2	\$4.99 ea
33	H217	clamp, hose, 2-1/4 dia	3	\$1.49 ea
34	C310	vac motor, 2 stage high performance	2	\$103.99 ea
35	H544	cuff hose, 2 X 2, wire reinforced	1	\$12.49 ea
36	PH628-24	vac hose, 2", wire reinforced	1	\$8.99/ft
37	G131	connector, cord lock	2	\$4.99 ea
38	E550	power cord, pigtail, 30", 12/3, black	2	\$11.49 ea
39	H220	fitting, strain relief, cord	2	\$3.19 ea
40	H221	nut, lock, 1/2" steel	2	\$1.99 ea
41	B136	elbow, brass, 90 deg, 1/4" mpt x 1/4" mpt	1	\$4.99 ea
42	B105	bushing, brass, 3/8"mpt x 1/4"	1	\$3.19 ea
43	B186	elbow, brass, 90 deg, 3/8"mpt x 3/8" fmpt	1	\$8.99 ea
44	H299	washer, 11/16" id x 1-1/2" od x .075, s/s	5	\$0.99 ea
45	B160	adapter, brass, 1/2" barb x 3/8" fsw, ball end	1	\$3.49 ea
46	H347	clamp, hose, 5/16-29/32	4	\$1.99 ea
47	PH615-26	sol hose, 1/2" kuri 100psi	1	\$8.99/ft
48	C322D	pump, 200psi, bypass, 115V	1	\$208.99 ea
49	H222	screw, #10-32 x 1-1/4" phil pan head, zinc	4	\$0.99 ea
50	B172	elbow, brass, 90 deg, 1/2" barb x 3/8"mpt	1	\$9.49 ea
51	H203	bolt, 1/4-20 x 1-1/4" hex head	2	\$0.99 ea
52	H211	washer, 1/4" id x 1" od, flat, s/s	6	\$0.99 ea
53	G052	washer, buna 1-1/8" od x 3/16" id	6	\$1.99 ea
54	H213	washer, 1/4" lock, s/s	4	\$0.99 ea
55	H215	nut, hex, 1/4-20 s/s	2	\$0.99 ea
56	P732	sol tank, speedster	1	\$141.99 ea
57	H770	bolt, 1/4-20 x 1/2" serrated hex flange, zinc	8	\$0.99 ea
58	H912	bracket, rear, fb/spy	1	\$9.99 ea
59	H307	washer, star, 1/4" steel zinc	2	\$0.99 ea
60	H316	bolt, 1/4-20 x 1-1/2" hex head, s/s	2	\$0.99 ea

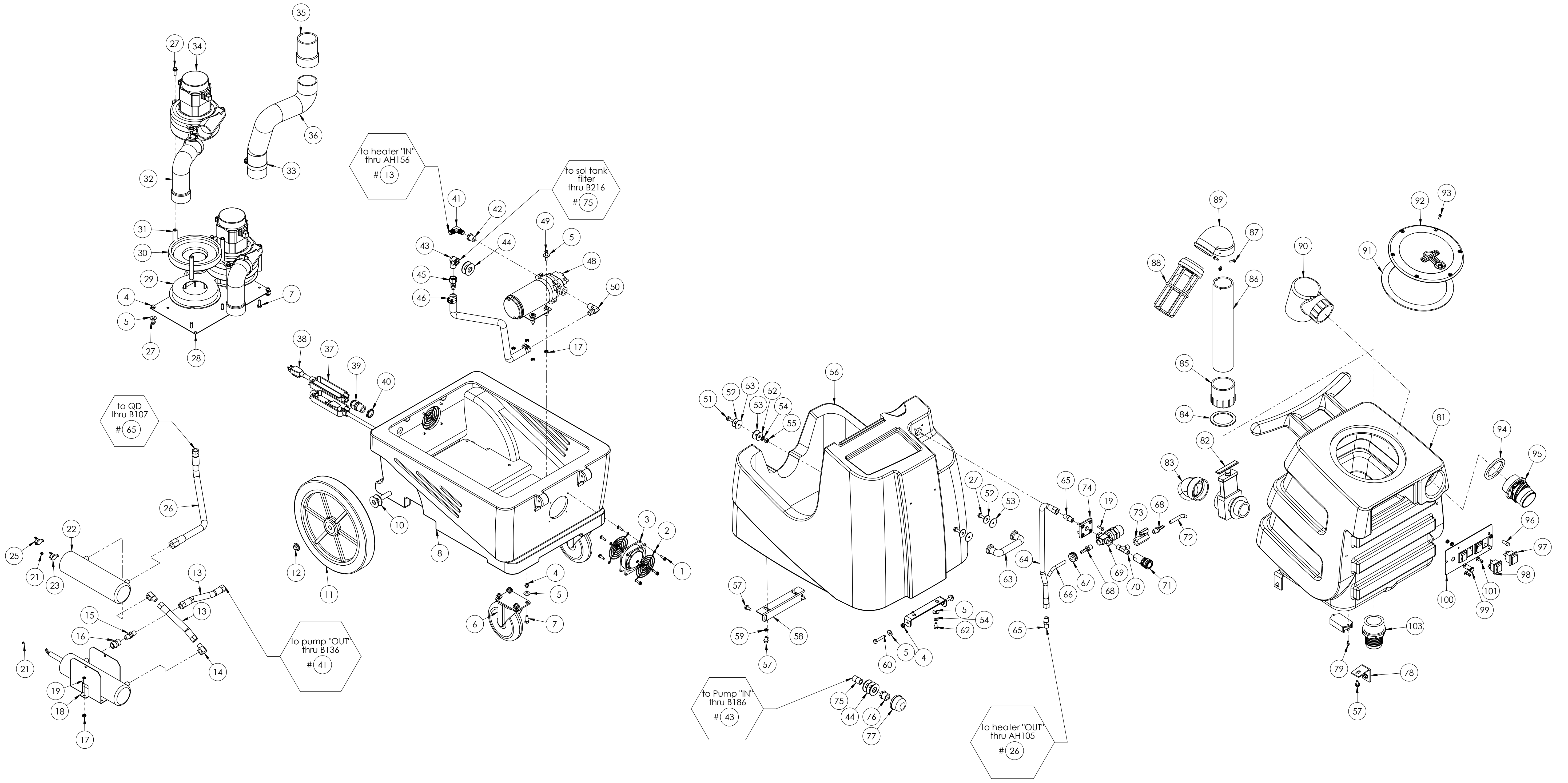
ITEM NO.	PART NO.	DESCRIPTION	QTY.	MSRP
61	H378	bracket, front hinge, sp/fb	1	\$8.99 ea
62	H201	bolt, 1/4-20 x 1/2", hex head, zinc	2	\$0.99 ea
63	H485	handle, breeze and dx	1	\$6.99 ea
64	AH120	sol hose, 28" x 1/4", 1/4 fpt	1	\$35.49 ea
65	B107	nipple, brass, 1/4"m, hex	2	\$3.19 ea
66	PH634-20	sol hose, 1/4", 300 PSI	1	\$6.49 ft
67	G034	grommet, rubber, 3/4" ID x 1-5/8" OD	1	\$0.99 ea
68	B109	adapter, brass, 1/4" barb x 1/4" mpt	2	\$1.99 ea
69	C322B	regulator, 200 PSI, blue spring	1	\$69.99 ea
70	B135	tee, brass, 1/4" mpt	1	\$5.49 ea
71	B102	qd, brass, 1/4" f	1	\$17.99 ea
72	PH634-36	sol hose, 1/4", 300 PSI	1	\$6.49 ft
73	B656	ball valve, 1/4"	1	\$13.49 ea
74	H484	plate, mounting, QD	1	\$4.99 ea
75	B216	nipple, brass, 3/8" x close	1	\$1.99 ea
76	B210	bushing, brass, 1/2"mpt x 3/8" fpt, hex	1	\$2.49 ea
77	B119A	filter, strainer, 1/2"	1	\$6.49 ea
78	H390A	bracket, "L" (all extractors)	2	\$6.99 ea
79	H246	screw, #8-32 x 3/8" SHCS, alloy	3	\$0.99 ea
80	E564	controller, circuit light	1	\$62.49 ea
81	P733	vac tank, speedster	1	\$190.99 ea
82	H225	valve, drain, 1-1/2"	1	\$20.99 ea
83	H226	spout, drain, 45 degree	1	\$3.19 ea
84	G002	gasket, cam fitting polyethylene, 2.35" OD 1.90" ID	1	\$6.49 ea
85	P684	adaptor, pvc 2, fmsl x fmt	1	\$6.99 ea
86	P682	pipe, pvc, 2"	1	\$7.99/ft
87	H297	screw, #8 x 1/2", hex head, zinc	3	\$0.99 ea
88	H490	float, 2", ball style	1	\$18.49 ea
89	P726	elbow, 2" float	1	\$11.49 ea
90	A926	elbow, inlet assembly 2"	1	\$15.99 ea
91	G091	gasket, 7", vac lid	1	\$11.99 ea
92	G090	lid, vac tank, black, 7"	1	\$36.99 ea
93	H304	screw, #8 x 5/8 phil oval, s/s	6	\$0.99 ea
94	G083	gasket, 2" inlet	1	\$2.49 ea
95	H135	Cuff-Lynx, 2" m cuff x 2" mpt	1	\$3.99 ea
96	E511	light, red, 250v	2	\$5.99 ea
97	E516	switch, rocker, 3 position	1	\$14.99 ea
98	E515	switch, rocker, 2 position	3	\$13.99 ea
99	E512B	light, indicator, 125v (amber)	1	\$9.99 ea
100	H348	plate, switch, sp, 4 hole	1	\$6.99 ea
101	H389	screw, #10-32 x 1/2" SHCS, alloy	1	\$0.99 ea
102	H612	washer, #8 flat, s/s	3	\$0.99 ea
103	P685	inlet, 2"	1	\$10.99 ea

ITEMS NOT SHOWN

PART NO.	DESCRIPTION	QTY	MSRP
G008	piglet filter	1	\$6.29 pak
G085	gasket, strip, 3/4" x 36" x 1/8"	1	\$4.99 ea
H375	hanger, wire formed, hose	1	\$10.99 ea
H230	screw, 10-32 x 1/2" phil pan head, s/s	2	\$0.99 ea
G029	banana bag, mesh bag, yellow	1	\$3.99 ea
H141	Cuff-Lynx, 2" x 1.5" reducer	1	\$3.99 ea
H110	Cuff-Lynx, 2" hose x 2" fem swivel Cuff-Lynx	1	\$3.99 ea
E530	power cord, ext 50', 12/3 black	2	\$74.99 ea



NAME	DATE	MYTEE PRODUCTS, INC. 858-679-1191
DRAWN M LaBarbera	8/5/11	
CHECKED		TITLE: speedster
<small>PROPRIETARY AND CONFIDENTIAL THE INFORMATION CONTAINED IN THIS DRAWING IS THE SOLE PROPERTY OF MYTEE PRODUCTS, INC. ANY REPRODUCTION IN PART OR AS A WHOLE WITHOUT THE WRITTEN PERMISSION OF MYTEE PRODUCTS, INC. IS PROHIBITED.</small>		SIZE DWG. NO. REV C 1001DX-200
SCALE: 1:48		DO NOT SCALE DRAWING SHEET 1 OF 2



NAME	DATE	MYTEE PRODUCTS, INC. 888-679-1191
M. LaBarbera	8/5/11	
CHECKED		TITLE:
PROPRIETARY AND CONFIDENTIAL THE INFORMATION CONTAINED IN THIS DRAWING IS THE SOLE PROPERTY OF MYTEE PRODUCTS, INC. ANY REPRODUCTION IN PART OR AS A WHOLE WITHOUT THE WRITTEN PERMISSION OF MYTEE PRODUCTS, INC. IS PROHIBITED.		speedster SIZE DWG. NO. REV D 1001DX-200 SCALE: 1:48 DO NOT SCALE DRAWING SHEET 2 OF 2