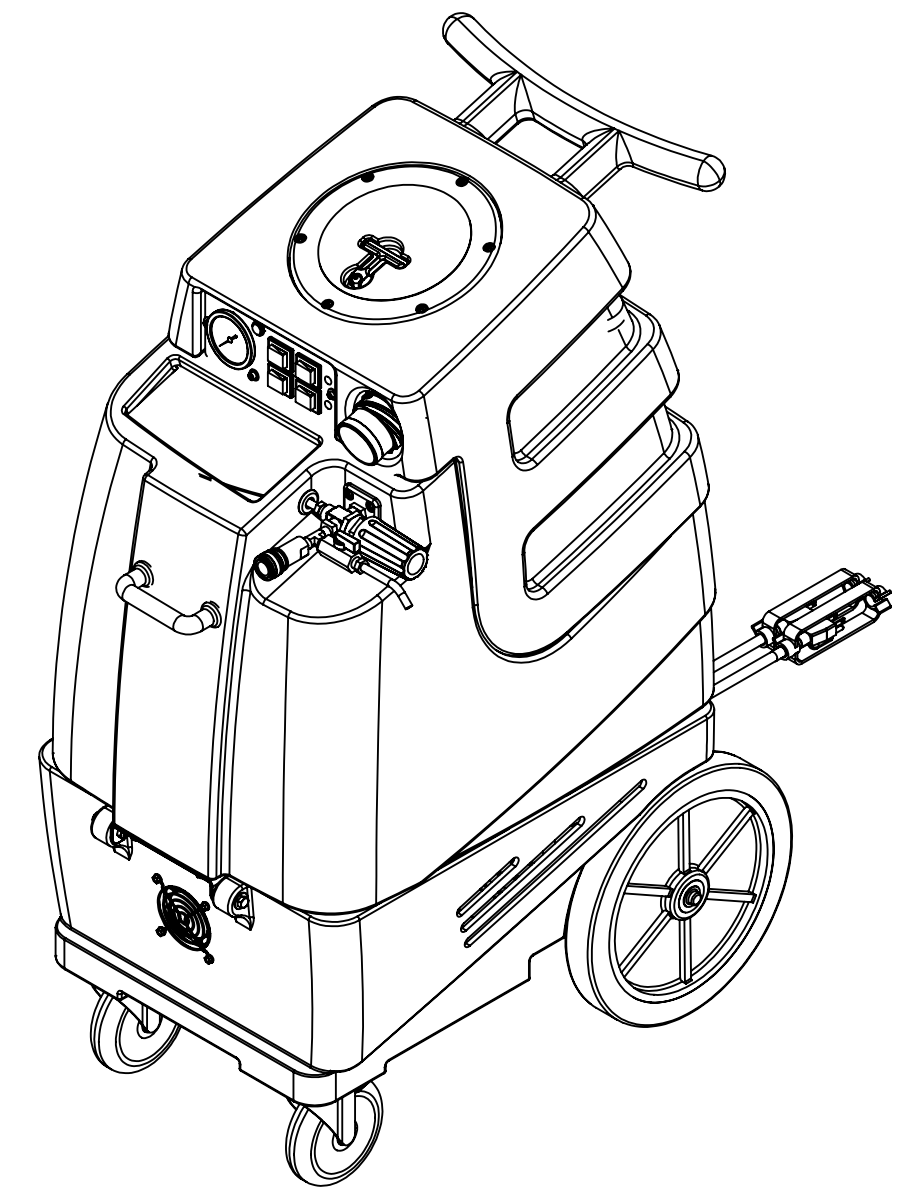


| ITEM NO. | PART NO. | DESCRIPTION                                    | QTY. | MSRP        |
|----------|----------|--|------|-------------|
| 1        | C317     | fan, cooling, 115V                             | 1    | \$21.49 ea  |
| 2        | H296     | guard, cooling fan, wire                       | 3    | \$2.99 ea   |
| 3        | H343     | screw, #10 x 5/8" hex head zinc                | 14   | \$0.99 ea   |
| 4        | H378     | bracket, front hinge, sp/fb                    | 1    | \$8.99 ea   |
| 5        | H210     | washer, 1/4" flat, s/s                         | 23   | \$0.99 ea   |
| 6        | H213     | washer, 1/4" lock, s/s                         | 4    | \$0.99 ea   |
| 7        | H201     | bolt, 1/4-20 x 1/2", hex head, zinc            | 2    | \$0.99 ea   |
| 8        | H216     | nut, lock, 1/4-20 nylon insert                 | 17   | \$0.99 ea   |
| 9        | H316     | bolt, 1/4-20 x 1-1/2" hex head, s/s            | 2    | \$0.99 ea   |
| 10       | H202     | bolt, 1/4-20 x 3/4" hex head, s/s              | 18   | \$0.99 ea   |
| 11       | H666     | caster, 5"                                     | 2    | \$23.19 ea  |
| 12       | P731     | base, speedster                                | 1    | \$141.99 ea |
| 13       | H254     | washer, axle, cut 1/2" id                      | 3    | \$0.99 ea   |
| 14       | H371     | axle, 18.25" x .50" dia                        | 1    | \$9.99 ea   |
| 15       | H251     | wheel, 12"                                     | 2    | \$41.99 ea  |
| 16       | H219     | cap, axle, 1/2"                                | 2    | \$0.99 ea   |
| 17       | G131     | connector, cord lock                           | 2    | \$4.99 ea   |
| 18       | E550     | power cord, pigtail, 30", 12/3, black          | 2    | \$11.49 ea  |
| 19       | H220     | fitting, strain relief, cord                   | 2    | \$3.19 ea   |
| 20       | H221     | nut, lock, 1/2" steel                          | 2    | \$1.99 ea   |
| 21       | H912     | bracket, rear, fb/spy                          | 1    | \$9.99 ea   |
| 22       | H307     | washer, star, 1/4" steel zinc                  | 2    | \$0.99 ea   |
| 23       | H770     | bolt, 1/4-20 x 1/2" serrated hex flange, zinc  | 8    | \$0.99 ea   |
| 24       | B107     | nipple, brass, 1/4"m, hex                      | 1    | \$3.19 ea   |
| 25       | AH108S   | sol hose, 1/4" x 24 1/4"                       | 2    | \$26.49 ea  |
| 26       | B103     | elbow, brass, 90 deg, 1/4"mpt x 1/4" fpt       | 2    | \$4.49 ea   |
| 27       | B135     | tee, brass, 1/4" mpt                           | 2    | \$5.49 ea   |
| 28       | B105     | bushing, brass, 3/8"mpt x 1/4"                 | 1    | \$3.19 ea   |
| 29       | C313     | pump, 500 psi, 115V                            | 1    | \$588.99 ea |
| 30       | B172     | elbow, brass, 90 deg, 1/2" barb x 3/8"mpt      | 3    | \$9.49 ea   |
| 31       | H347     | clamp, hose, 5/16-29/32                        | 8    | \$1.99 ea   |
| 32       | PH615-10 | sol hose, 1/2" kuri 100 psi                    | 1    | \$8.99/ft   |
| 33       | B246     | plug, brass, 3/8" mpt, hex                     | 5    | \$1.99 ea   |
| 34       | B242     | tee, brass, 3/8" fpt x 3/8" mpt x 3/8" fpt     | 1    | \$13.99 ea  |
| 35       | PH615-36 | sol hose, 1/2" kuri 100 psi                    | 1    | \$8.99/ft   |
| 36       | B160     | adapter, brass, 1/2" barb x 3/8" fsw, ball end | 1    | \$3.49 ea   |
| 37       | B207     | elbow, brass, 90 deg, 1/4" fpt x 1/4" fpt      | 1    | \$5.99 ea   |
| 38       | H601     | plate, manifold, parallel                      | 1    | \$13.49 ea  |
| 39       | G059     | exhaust boot, plastisol                        | 2    | \$4.99 ea   |
| 40       | H217     | clamp, hose, 2-1/4 dia                         | 3    | \$1.49 ea   |
| 41       | PH628-24 | vac hose, 2" wire reinforced, gray             | 1    | \$8.99/ft   |
| 42       | H544     | cuff hose, 2 X 2, wire reinforced              | 1    | \$12.49 ea  |
| 43       | H768     | bolt, 1/4-20 x 3/4" serrated hex flange, zinc  | 11   | \$0.99 ea   |
| 44       | C302A    | motor, 3-stage, 115 cfm, 14.5 amps             | 2    | \$148.99 ea |
| 45       | G004     | gasket, vacuum motor                           | 4    | \$8.99 ea   |
| 46       | P750     | manifold, dual vac, parallel                   | 1    | \$15.99 ea  |
| 47       | H501     | vac support, 3 stage, 4-1/16"                  | 6    | \$4.99 ea   |
| 48       | P732     | sol tank, speedster                            | 1    | \$141.99 ea |
| 49       | G018     | cover, sol tank (sp)                           | 1    | \$12.99 ea  |
| 50       | H485     | handle, breeze and dx                          | 1    | \$6.99 ea   |
| 51       | G052     | washer, buna 1-1/8" od x 3/16" id              | 6    | \$1.99 ea   |
| 52       | H211     | washer, 1/4" id x 1" od, flat, s/s             | 6    | \$0.99 ea   |
| 53       | B119A    | filter, strainer, 1/2"                         | 1    | \$6.49 ea   |
| 54       | B210     | bushing, brass, 1/2"mpt x 3/8" fpt, hex        | 1    | \$2.49 ea   |
| 55       | H299     | washer, 11/16" id x 1-1/2" od x .075, s/s      | 5    | \$0.99 ea   |
| 56       | B216     | nipple, brass, 3/8" x close                    | 1    | \$1.99 ea   |
| 57       | B186     | elbow, brass, 90 deg, 3/8"mpt x 3/8" fmpt      | 1    | \$8.99 ea   |
| 58       | C313C    | regulator, 450 psi, silver spring              | 1    | \$86.99 ea  |
| 59       | PH634-36 | sol hose, 1/4", 300 PSI                        | 1    | \$6.49 ft   |
| 60       | B109     | adapter, brass, 1/4" barb x 1/4" mpt           | 2    | \$1.99 ea   |
| 61       | B656     | ball valve, 1/4"                               | 1    | \$13.49 ea  |
| 62       | B102     | qd, brass, 1/4" f                              | 1    | \$17.99 ea  |

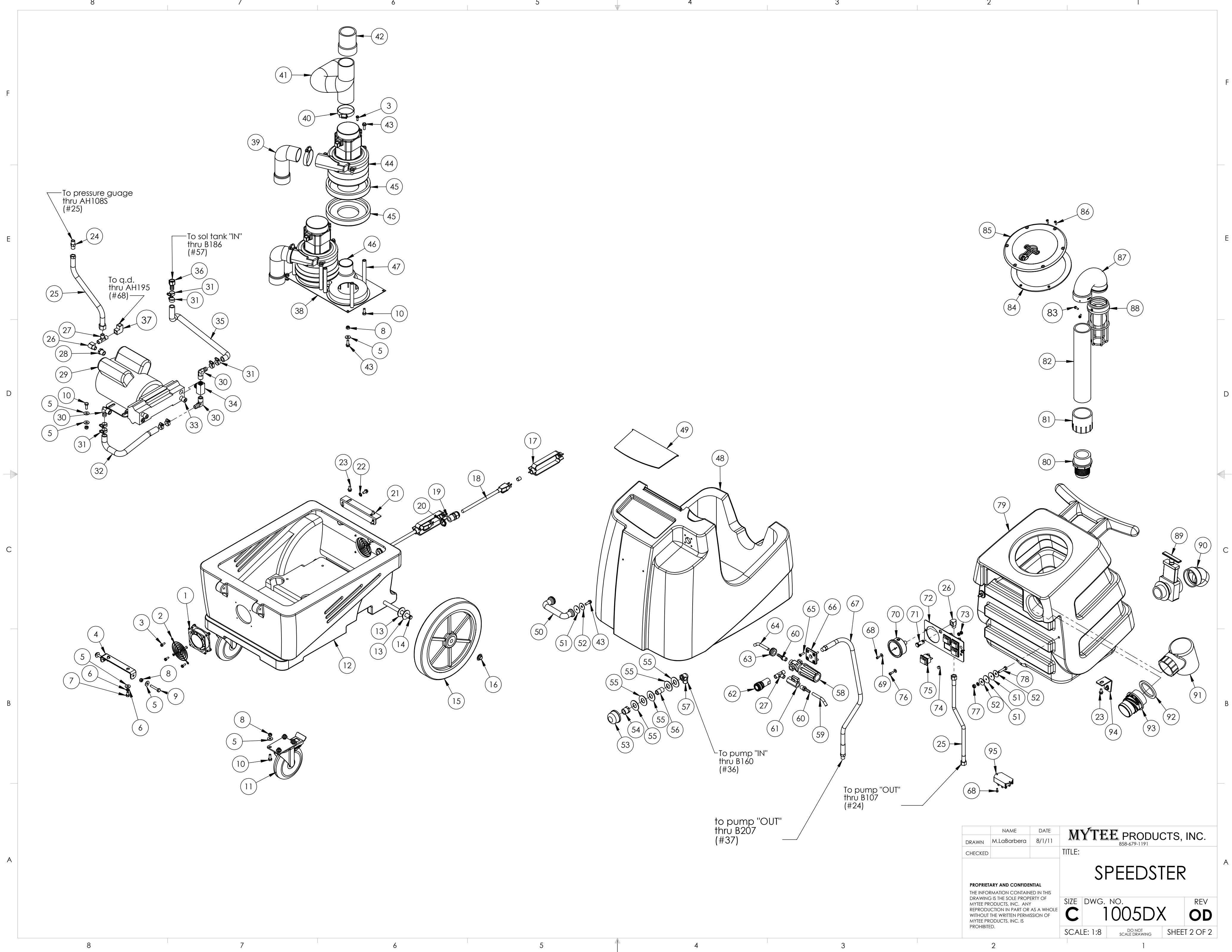
| ITEM NO. | PART NO. | DESCRIPTION                              | QTY. | MSRP        |
|----------|----------|--|------|-------------|
| 63       | G034     | grommet, rubber, 3/4" ID x 1-5/8" OD     | 1    | \$0.99 ea   |
| 64       | PH634-20 | sol hose, 1/4", 300 PSI                  | 1    | \$6.49 ft   |
| 65       | H256     | screw, #10-32 x 3/4" phil pan head, zinc | 4    | \$0.99 ea   |
| 66       | H484     | plate, mounting, QD                      | 1    | \$4.99 ea   |
| 67       | AH195    | sol hose, 57" x 1/4", (OAL), m           | 1    | \$37.99 ea  |
| 68       | H246     | screw, #8-32 x 3/8" SHCS, alloy          | 3    | \$0.99 ea   |
| 69       | H612     | washer, #8 flat, s/s                     | 3    | \$0.99 ea   |
| 70       | H308D    | gauge, pressure, 2000 PSI                | 1    | \$38.99 ea  |
| 71       | E512B    | light, indicator, 125v (amber)           | 1    | \$9.99 ea   |
| 72       | H337     | plate, switch, sp, 4 hole w/gauge        | 1    | \$8.99 ea   |
| 73       | H273     | nut, kep, #10-32 zinc                    | 2    | \$0.99 ea   |
| 74       | H422     | plug, dome 3/8", black                   | 2    | \$0.99 ea   |
| 75       | E515     | switch, rocker, 2 position               | 4    | \$13.99 ea  |
| 76       | H389     | screw, #10-32 x 1/2" SHCS, alloy         | 1    | \$0.99 ea   |
| 77       | H215     | nut, hex, 1/4-20 s/s                     | 2    | \$0.99 ea   |
| 78       | H203     | bolt, 1/4-20 x 1-1/4" hex head           | 2    | \$0.99 ea   |
| 79       | P733     | vac tank, speedster                      | 1    | \$190.99 ea |
| 80       | P685     | inlet, 2"                                | 1    | \$10.99 ea  |
| 81       | P684     | adaptor, pvc 2, fmsl x fmf               | 1    | \$6.99 ea   |
| 82       | P682     | pipe, pvc, 2"                            | 1    | \$7.99/ft   |
| 83       | H297     | screw, #8 x 1/2", hex head, zinc         | 3    | \$0.99 ea   |
| 84       | G091     | gasket, 7", vac lid                      | 1    | \$11.99 ea  |
| 85       | G090     | lid, vac tank, black, 7"                 | 1    | \$36.99 ea  |
| 86       | H304     | screw, #8 x 5/8 phil oval, s/s           | 6    | \$0.99 ea   |
| 87       | P726     | elbow, 2" float                          | 1    | \$11.49 ea  |
| 88       | H490     | float, 2", ball style                    | 1    | \$18.49 ea  |
| 89       | H225     | valve, drain, 1-1/2"                     | 1    | \$20.99 ea  |
| 90       | H226     | spout, drain, 45 degree                  | 1    | \$3.19 ea   |
| 91       | A926     | elbow, inlet assembly 2"                 | 1    | \$15.99 ea  |
| 92       | G083     | gasket, 2" inlet                         | 1    | \$2.49 ea   |
| 93       | H135     | Cuff-Lynx, 2" m cuff x 2" mpt            | 1    | \$3.99 ea   |
| 94       | H390A    | bracket, "L" (all extractors)            | 2    | \$6.99 ea   |
| 95       | E564     | controller, circuit light                | 1    | \$62.49 ea  |



**ITEMS NOT SHOWN**

|                | DESCRIPTION                                  | QTY. | MSRP       |
|----------------|--|------|------------|
| G008           | piglet filet                                 | 1    | \$6.29 pak |
| G085           | gasket, strip, 3/4" x 36" x 1/8"             | 1    | \$4.99 ea  |
| H375           | hanger, wire formed, hose                    | 2    | \$10.99 ea |
| H230           | screw, 10-32 x 1/2" phil pan head, s/s       | 2    | \$0.99 ea  |
| G029           | banana bag, mesh bag, yellow                 | 1    | \$3.99 ea  |
| H141           | Cuff-Lynx, 2" to 1.5" reducer                | 1    | \$3.99 ea  |
| E530           | power cord, ext 50', 12/3 black              | 2    | \$74.99 ea |
| H110           | Cuff-Lynx, 2" hose x 2" fem swivel Cuff-Lynx | 1    | \$3.99 ea  |
| AD127          | stop sign, register your product             | 1    |            |
| ADM-SPEEDSTERS | manual, speedsters                           | 1    |            |

|   |        |   |                           |
|---|--------|---|---------------------------|
| NAME  | DATE   | <b>MYTEE PRODUCTS, INC.</b><br>858-679-1191 |                           |
| DRAWN<br>M.LaBarbera  | 8/1/11 | TITLE:<br><b>SPEEDSTER</b>                  |                           |
| CHECKED   |        | SIZE<br><b>C</b>                            | DWG. NO.<br><b>1005DX</b> |
| <small>PROPRIETARY AND CONFIDENTIAL<br/>THE INFORMATION CONTAINED IN THIS DRAWING IS THE SOLE PROPERTY OF MYTEE PRODUCTS, INC. ANY REPRODUCTION IN PART OR AS A WHOLE WITHOUT THE WRITTEN PERMISSION OF MYTEE PRODUCTS, INC. IS PROHIBITED.</small> |        | REV<br><b>OD</b>                            | SHEET 1 OF 2              |
| SCALE: 1:8  |        | DO NOT SCALE DRAWING                        |                           |



|   |             |        |                             |              |
|---|-------------|--------|-----------------------------|--------------|
|   | NAME        | DATE   | <b>MYTEE PRODUCTS, INC.</b> |              |
| DRAWN   | M.LaBarbera | 8/1/11 | 858-679-1191                |              |
| CHECKED   |             |        | TITLE:                      |              |
| <b>PROPRIETARY AND CONFIDENTIAL</b>   |             |        | <b>SPEEDSTER</b>            |              |
| THE INFORMATION CONTAINED IN THIS DRAWING IS THE SOLE PROPERTY OF MYTEE PRODUCTS, INC. ANY REPRODUCTION IN PART OR AS A WHOLE WITHOUT THE WRITTEN PERMISSION OF MYTEE PRODUCTS, INC. IS PROHIBITED. |             |        | SIZE DWG. NO.               | REV          |
|   |             |        | <b>C</b> 1005DX             | <b>OD</b>    |
| SCALE: 1:8  |             |        | DO NOT SCALE DRAWING        | SHEET 2 OF 2 |